

Guide for installing ROKU Channel to your ROKU Device

Please follow below steps to install ROKU channel in your ROKU device via side-loading method

Note: This will remove any already installed side loaded channel. As at a time only ONE side loaded channel can be installed as per ROKU.

Pre-requisites:

1. You should have channel package (<ChannelName>App_<Version>.zip provided by your service provider.
2. You should have working and latest OS updated ROKU device

Step1: Enable Developer Settings on a Roku device

Using your Roku remote, enter the following sequence:

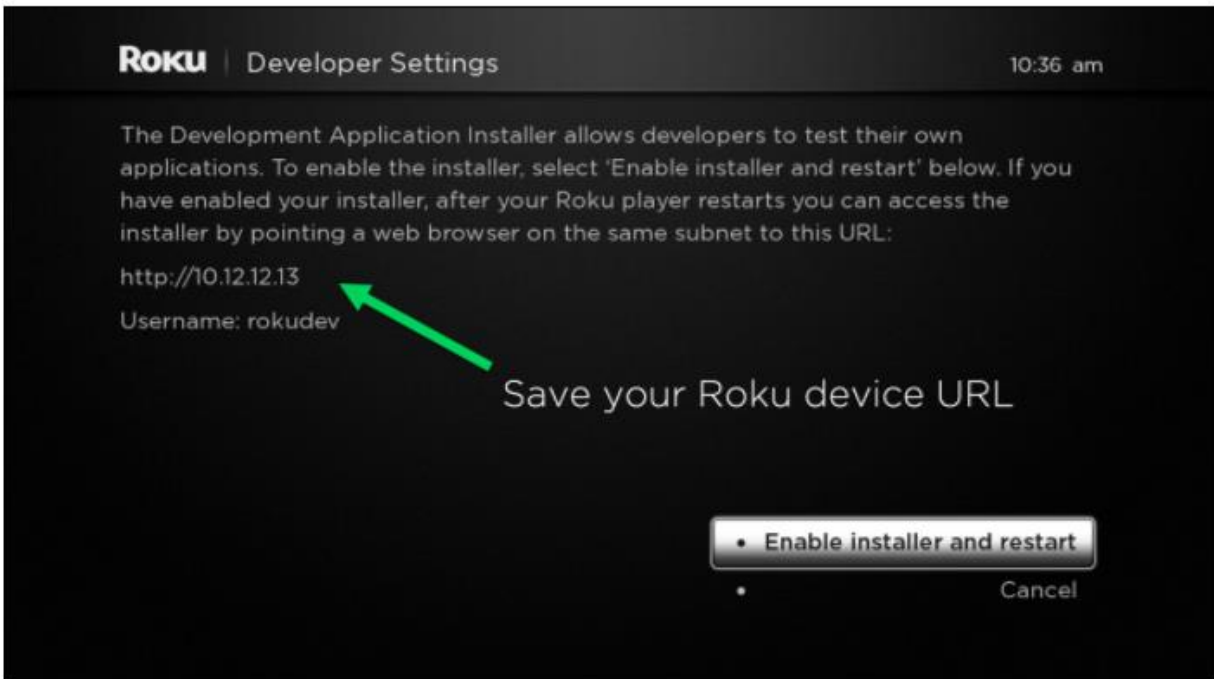


- HOME – Three times
- UP – Two times
- RIGHT – One time
- LEFT – One time
- RIGHT – One time
- LEFT – One time
- RIGHT – One time

Make sure you do this quickly and in above order.

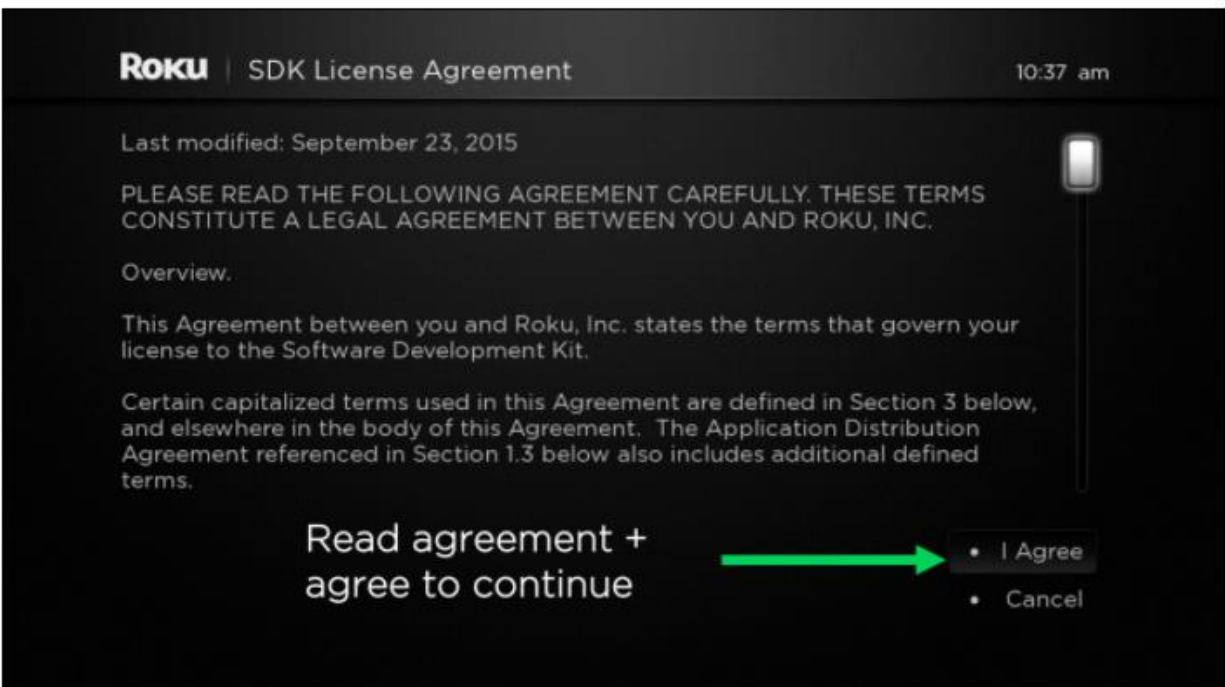
This will open Developer Settings screen on your ROKU device.

Follow the steps provided in the following flow to enable Developer Settings:



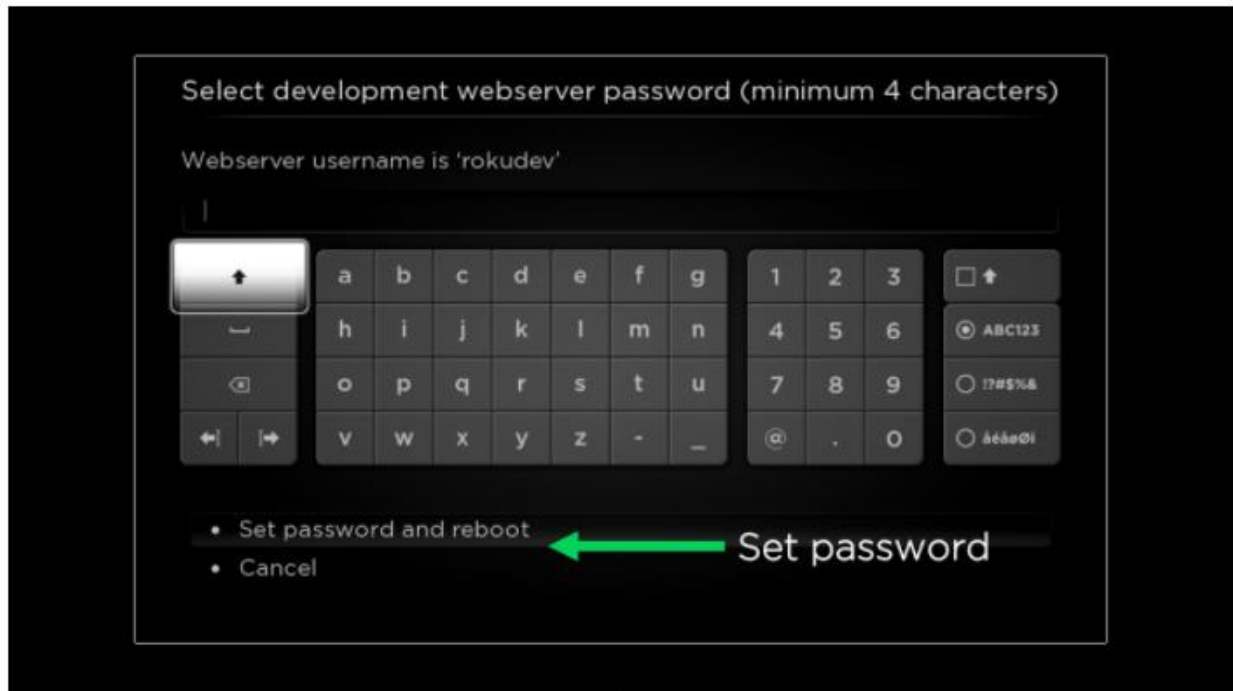
Once you begin this process, the dialog will prompt you to restart the device to continue to the process.

Make sure to save the Roku device URL! You will need this again during this initial setup. After enabling the installer and then click "**I Agree**"



The following prompt will ask to **set a password** for the Roku device:

This ensures your device is protected on your local area network.

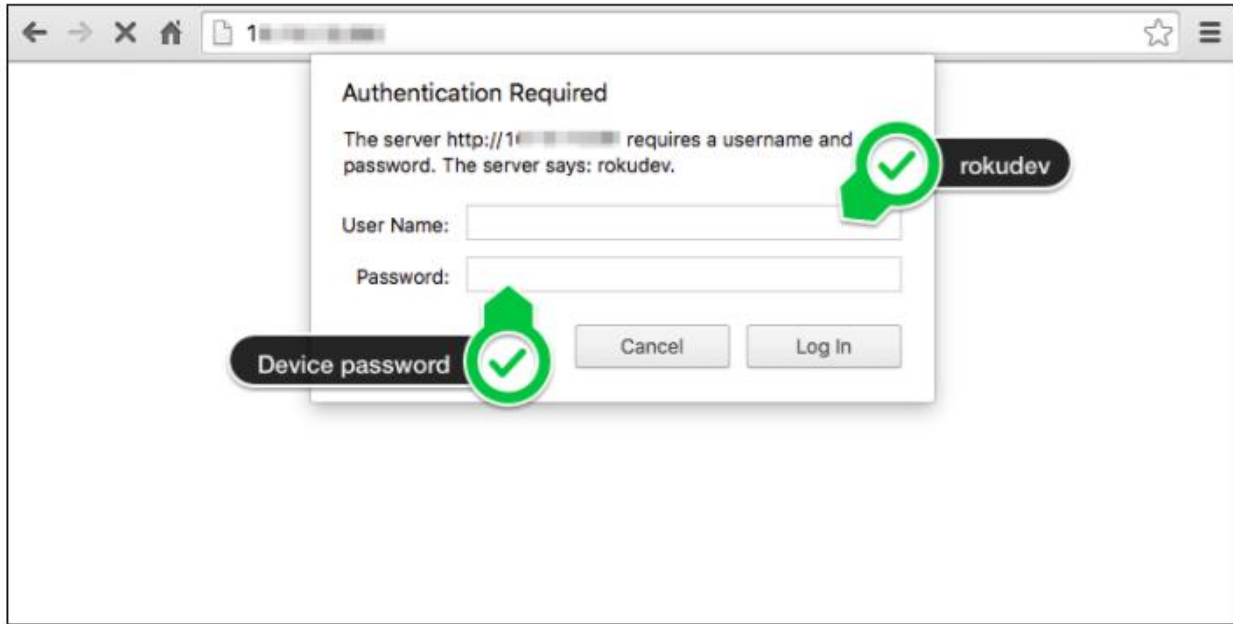


This completes the steps for enabling Developer Settings. Continue to the next section for loading / Installing ROKU channel onto the device.

Step2: Accessing the Development Application Installer

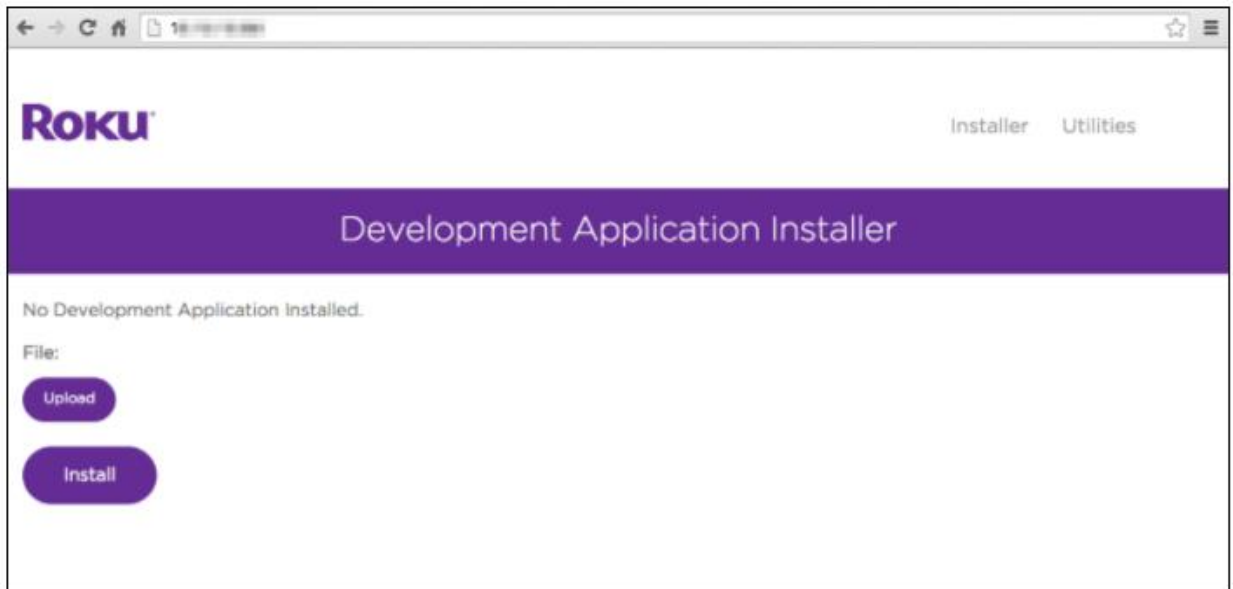
After rebooting your ROKU device, open a web browser and enter the Roku device URL (i.e. <http://192.168.x.x>)

Enter username '**rokudev**' and your '**password**' in browser pop up.



Once the page opens, you have successfully connected to your Roku device with Developer Settings enabled.

The main screen will show the Development Application Installer:

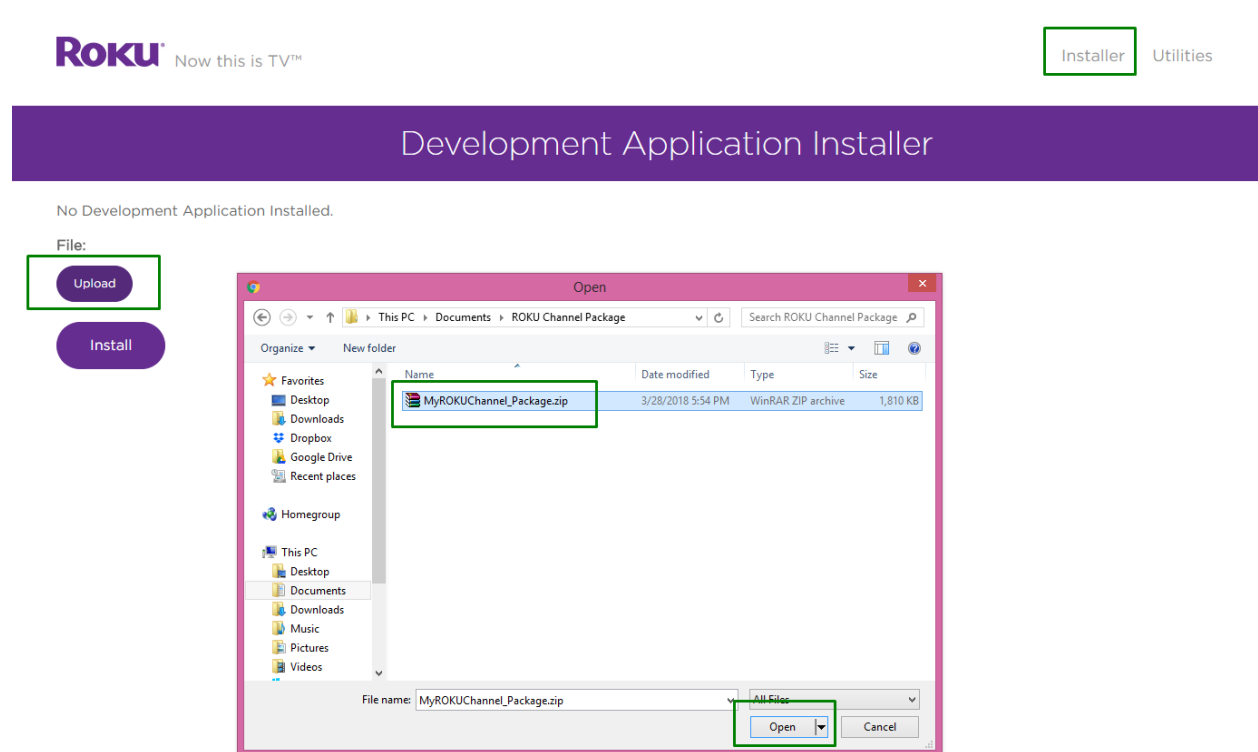


Now that you have configured and enabled Developer Settings on your Roku device,

Step3: Uploading / Installing Channel ZIP provided by Service Provider

In your browser you should be able to see “Development Application Installer” as shown in above snapshot.

Click on ‘Upload’ button. It will show following screen.



Now, go to directory where you have downloaded Channel Package ZIP file provided by your service provider.

Select that file and press “Open”.

Development Application Installer

No Development Application Installed.

File:

Upload

MyROKUCChannel_Package.zip

Install

Now, you will be able to see ZIP package name besides of Upload button.

Click on **“Install”** button.

It will show something similar to following screen after successfully installing on your ROKU device.

Development Application Installer

Currently Installed Application:

ae102e53dd7f32fcc55b85bef2dda7ce
zip file in internal memory (2228872 bytes)

Delete

Convert to cramfs

Convert to squashfs

File:

Upload

Replace

Application Received: 2228872 bytes stored. ×

Install Success. ×

Now you will be able to see your Channel will automatically start and also you can see Channel LOGO on Home screen of your ROKU device.

You can open and login to your channel using your credentials.

Enjoy 😊.